



Parts Manual

Mfg. No: 030211-0
6,200 Watt Briggs & Stratton

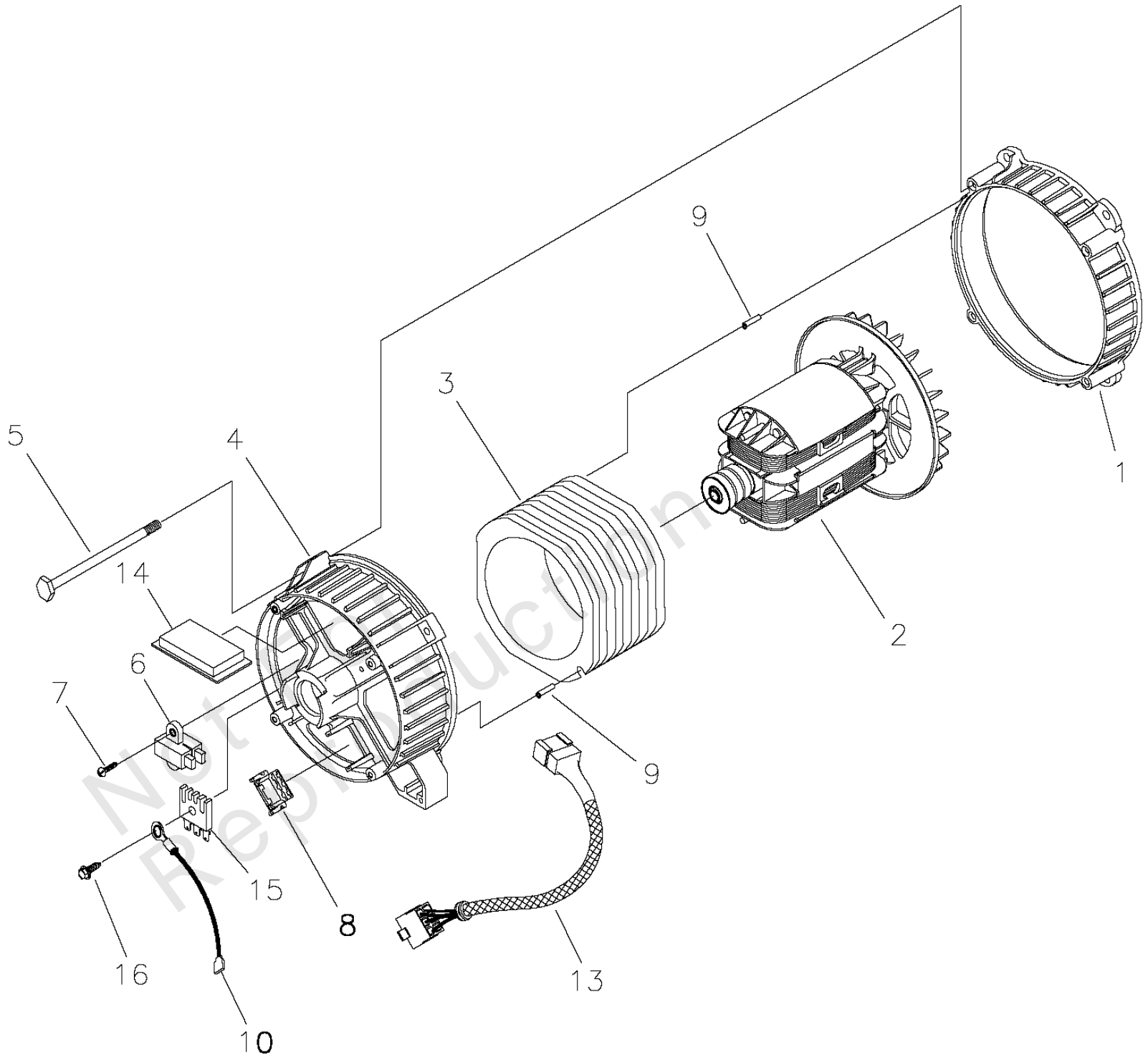
Model Components	Page
Alternator (191794).....	4
Control Panel (191780).....	6
Main Unit (195532).....	8
Wheel Kit (190312).....	12
Wiring Diagram (191786).....	14
Wiring Schematic (191786).....	16
Torque Specification Chart.....	18

Not For
Reproduction

Alternator (191794)

Note: Unless noted otherwise, use the standard torque specifications

Mfg. No: 030211-0



Alternator (191794)

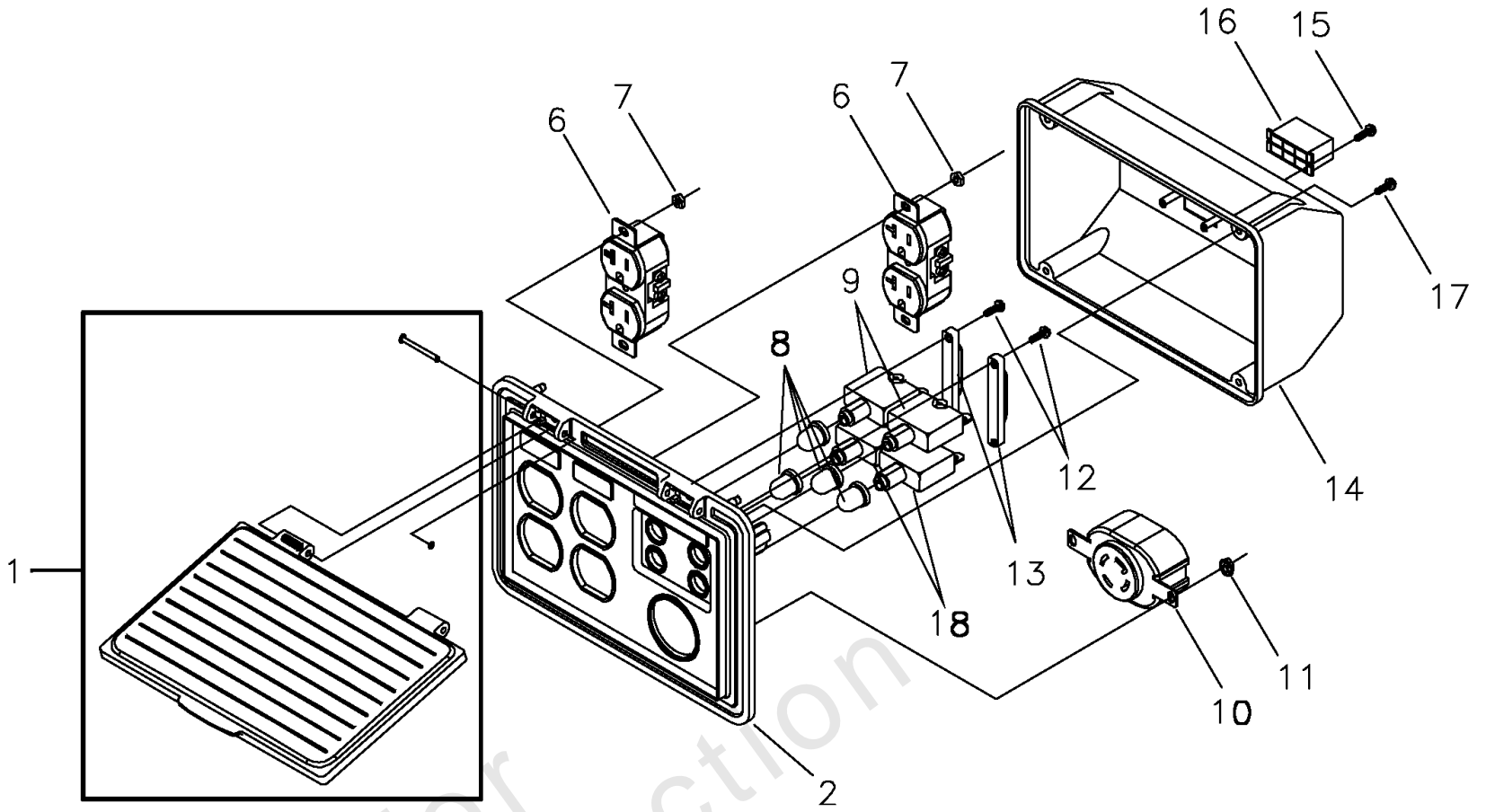
REF NO	PART NO	QTY	DESCRIPTION
1	186059GS		ADAPTER, Mounting,Alternator
2	191876GS		ROTOR
3	192196AGS		STATOR
4	186060GS		RBC, with O-Ring (p/n 189197GS)
5	86308HGS		HHCS, M6 - 1.0 x 140 SEMS
6	66386GS		ASSY, Holder, Rectifier/Brush
7	66849GS		TAPTITE, M5 - 0.8 x 16
8	22694GS		RECEPTACLE, 6 pin
9	81917GS		PIN, Roll, 4mm x 10
10	193428AGS		ASSY, Wire, Ground
13	194274GS		HARNESS, Wire, Power
14	189769GS		REGULATOR, Voltage-AVR
15	65795GS		RECTIFIER, Battery Charge
16	66849AGS		TAPTITE, M5 - 0.8 x 20
	189197GS		O-Ring

Not For
Reproduction

Control Panel (191780)

Note: Unless noted otherwise, use the standard torque specifications

Mfg. No: 030211-0



Not For
Reproduction

Control Panel (191780)

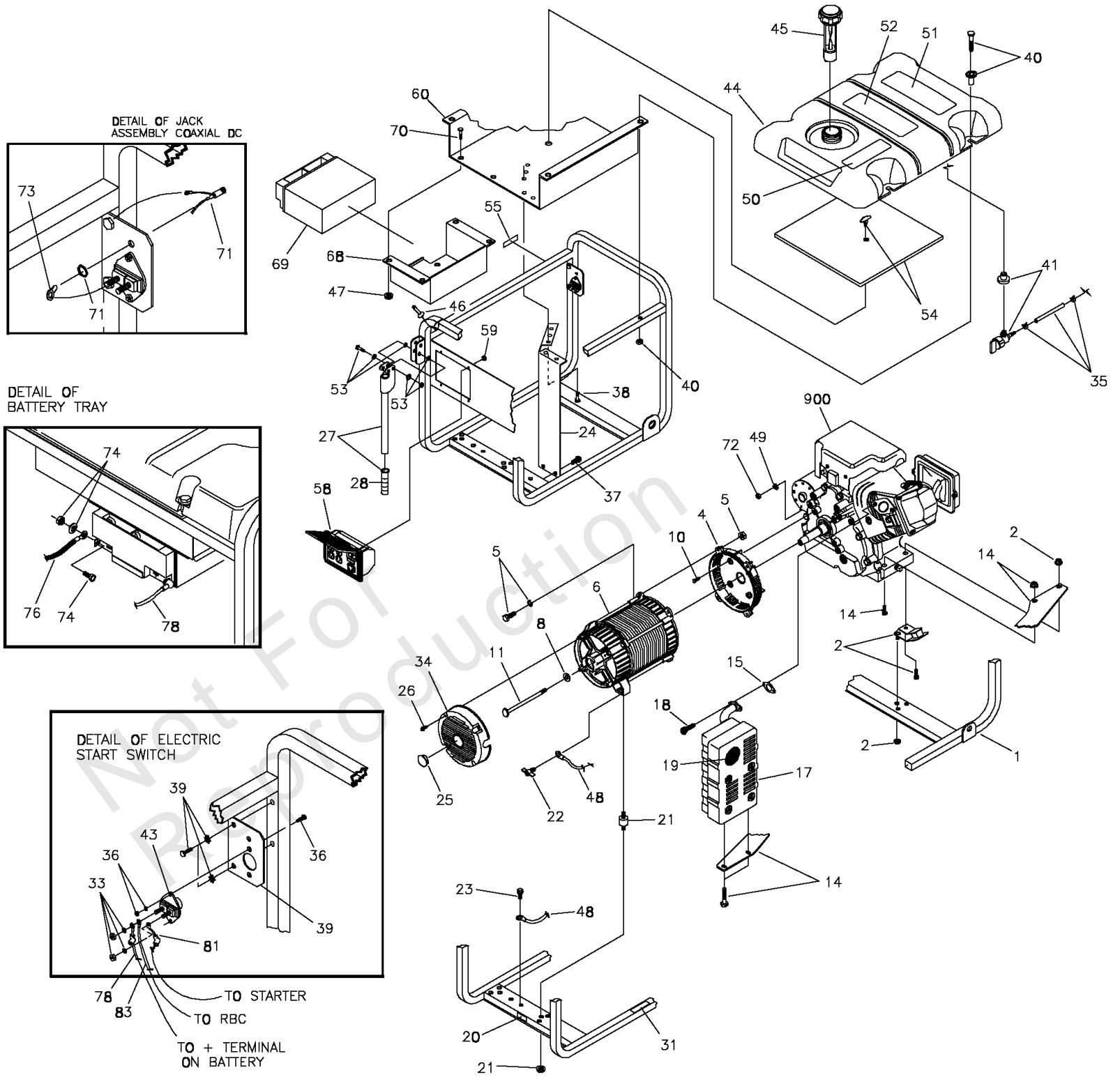
REF NO	PART NO	QTY	DESCRIPTION
1	195112GS		KIT, Control Panel Lid
2	191450GS		CONTROL PANEL, Compact
6	68759GS		OUTLET, 120V, 20A, Duplex
7	-		NUT, Palnut, 5/32 -(Purchase locally)
8	84198GS		CAP, Breaker, Circuit
9	75207AGS		BREAKER, Circuit, 30A
10	43437GS		OUTLET, 120/240V Locking, 30A
11	-		NUT, Palnut, 3/16 -(Purchase locally)
12	-		PPPHS, M3- 0.5 x 18 -(Purchase locally)
13	93857GS		BAR, Retaining
14	188890GS		COVER, Back, -Control Panel
15	-		SCREW, Self Tapping, STC 3 x 18 -(Purchase locally)
16	22694GS		HOUSING, Receptacle
17	-		SCREW, Tapping, 3.5 x 14 -(Purchase locally)
18	75207PGS		BREAKER, Circuit, 25A

Not For
Reproduction

Main Unit (195532)

Note: Unless noted otherwise, use the standard torque specifications

Mfg. No: 030211-0



Main Unit (195532)

REF NO	PART NO	QTY	DESCRIPTION
1	M190305GS		CRADLE
2	194150GS		KIT,Vibration Mount, 45°.
4	190220GS		HOUSING, Engine Adapter
5	194151GS		KIT, Adptr, Hdwr Mounting
6	~NSP		ASSY, Alternator -(see "Alternator")
8	96796GS		WASHER, M8 Flat
10	190274BGS		SBHCS, 3/8-16 x 1.0 Lg.
11	187365FGS		HHCS, 5/16-24 x 7.44
14	194729GS		KIT, Muffler & Brct Hardware
15	695398		GASKET, Exhaust
17	189008GS		MUFFLER
18	-		SCREW, 5/16 - 18 x 3/4" -(Purchase locally)
19	83083GS		SCREEN, Spark Arrest
20	B4986GS		DECAL, Ground
21	194153GS		KIT, Vibration, Mount
22	86494GS		SCREW, Wing M6 - 1.0 x 16
23	86292GS		SCREW, 10-16 x 3/4 Self Drill
24	194390GS		SHIELD, Heat
25	191190GS		CAP
26	74908GS		TAPTITE, M5-0.8 x 10
27	B193200GS		ASSY, Handle -(Includes Item 28)
28	189718GS		GRIP, Handle
31	191436GS		DECAL, Hot Muffler
33	194441GS		KIT, Contact Starter Hardware
34	195422GS		COVER, Bearing Carrier
35	194265GS		KIT, Fuel Hose, with Clamps
36	194440GS		KIT, Starter Mounting Hardware
37	B2153GS		SCREW, 12-14 x 7/8 Self Drilling
38	56893GS		SCREW, 10-24 x 1/2 Crimptite
39	194439GS		KIT, Mounting Plate Switch
40	195477GS		KIT, Hardware Tank Fuel
41	192980GS		KIT, Valve,Tank
43	77282GS		SWITCH, Starter
44	194217GS		ASSY, Tank, Fuel -(Includes Items 41, 50, 51 & 52)
45	B4363GS		CAP, Fuel Gauge
46	B4135GS		PIN, with Lanyard
47	77395GS		NUT, M6 Flange Lock
48	195373GS		WIRE, Ground
49	-		WASHER, M6 Shakeproof -(Purchase locally)
50	188333GS		DECAL, Instruction, Fuel Level
51	194799GS		DECAL, Danger
52	189235GS		DECAL, Start Instructions
53	194034GS		KIT, Handle Fold-down Hardware
54	194448GS		KIT, Insulation with Clip
55	191435GS		DECAL, Fuel Shut-off
58	191757GS		ASSY, Control Panel -(see "Control Panel")
59	-		NUT, Palnut, 3/16" -(Purchase locally)

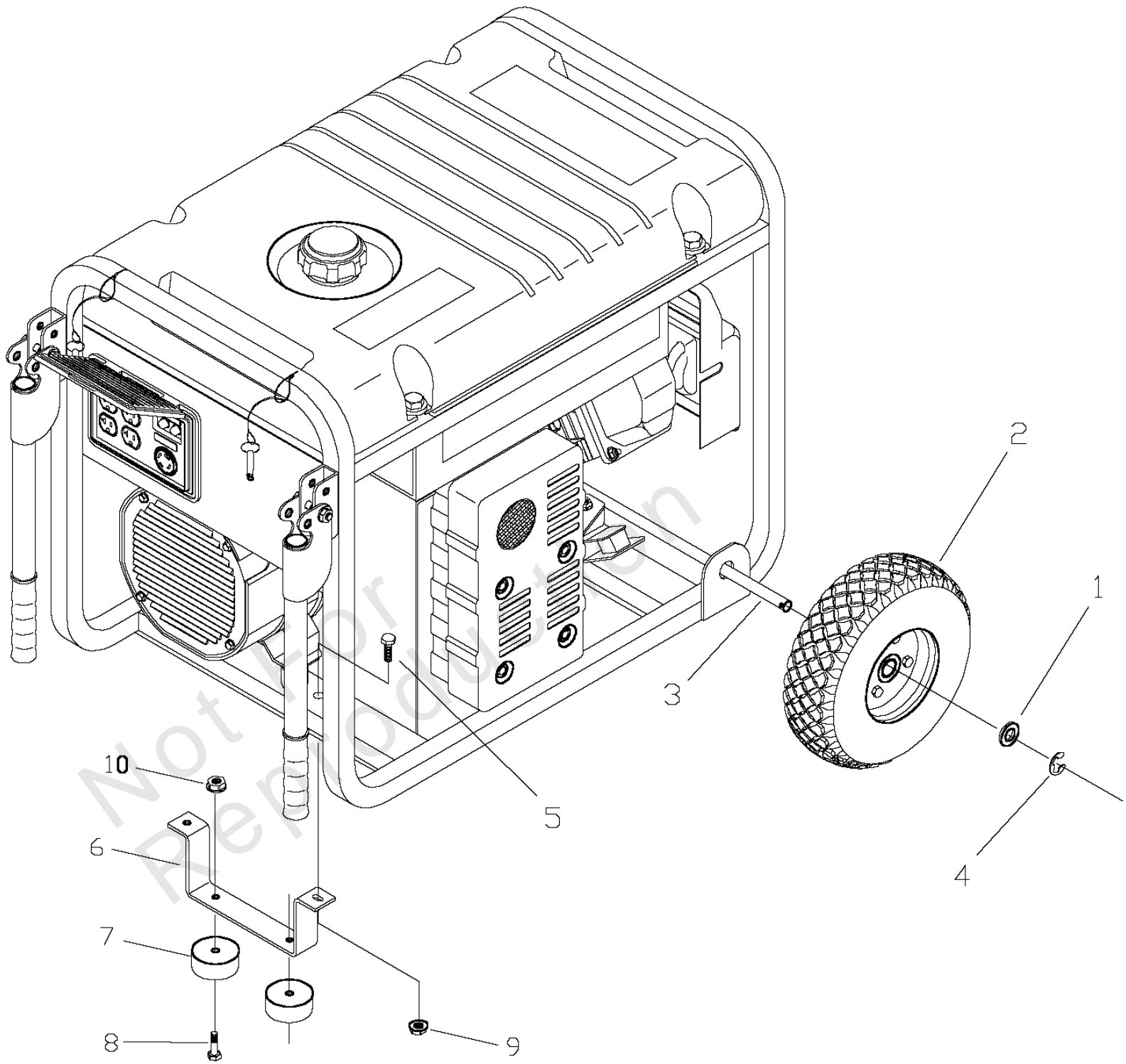
Main Unit (195532)

REF NO	PART NO	QTY	DESCRIPTION
60	194389GS		SHIELD, Heat
68	195680GS		TRAY, Battery
69	193043GS		BATTERY
70	-		HHCS, M6 - 1.0 x 12 -(Purchase locally)
71	192531GS		ASSY, Jack, DC
72	-		NUT, 1/4 - 20 -(Purchase locally)
73	58359GS		LUG, 5/16 #22/18 I-S
74	193347GS		KIT, Battery Hardware
76	185939KGS		ASSY,Wire, #55
78	189302CGS		ASSY,Wire, #13
81	189302GGS		ASSY,Wire, #16
83	192355GS		ASSY,Wire, #13
900	-		ENGINE -Contact Engine Manufacturer
	MS5242		MANUAL, Engine -Not Illustrated
	195529GS		MANUAL, Owners -Not Illustrated
	BB3061GS		BOTTLE, Oil -Not Illustrated
	B4177GS		CHARGER, Battery -Not Illustrated
	195578GS		KIT, Decals Service -Not Illustrated

Wheel Kit (190312)

Note: Unless noted otherwise, use the standard torque specifications

Mfg. No: 030211-0



Wheel Kit (190312)

REF NO	PART NO	QTY	DESCRIPTION
1	-		WASHER, 5/8 -(Purchase locally)
2	B4966GS		WHEEL
3	191267GGS		AXLE, 5/8" x 23.62"
4	191265GS		E-RING, 5/8
5	-		HHCS, M8 - 1.25 x 20 -(Purchase locally)
6	B187101GS		LEG, Support
7	191413GS		VIBE MOUNT, with Washer
8	-		HHCS, 1/4 - 20 x 1 -(Purchase locally)
9	52858GS		NUT, M8 - 1.25 Lock
10	192432GS		NUT, 1/4 - 20 Serrated Lock

Not For
Reproduction

Wiring Diagram (191786)

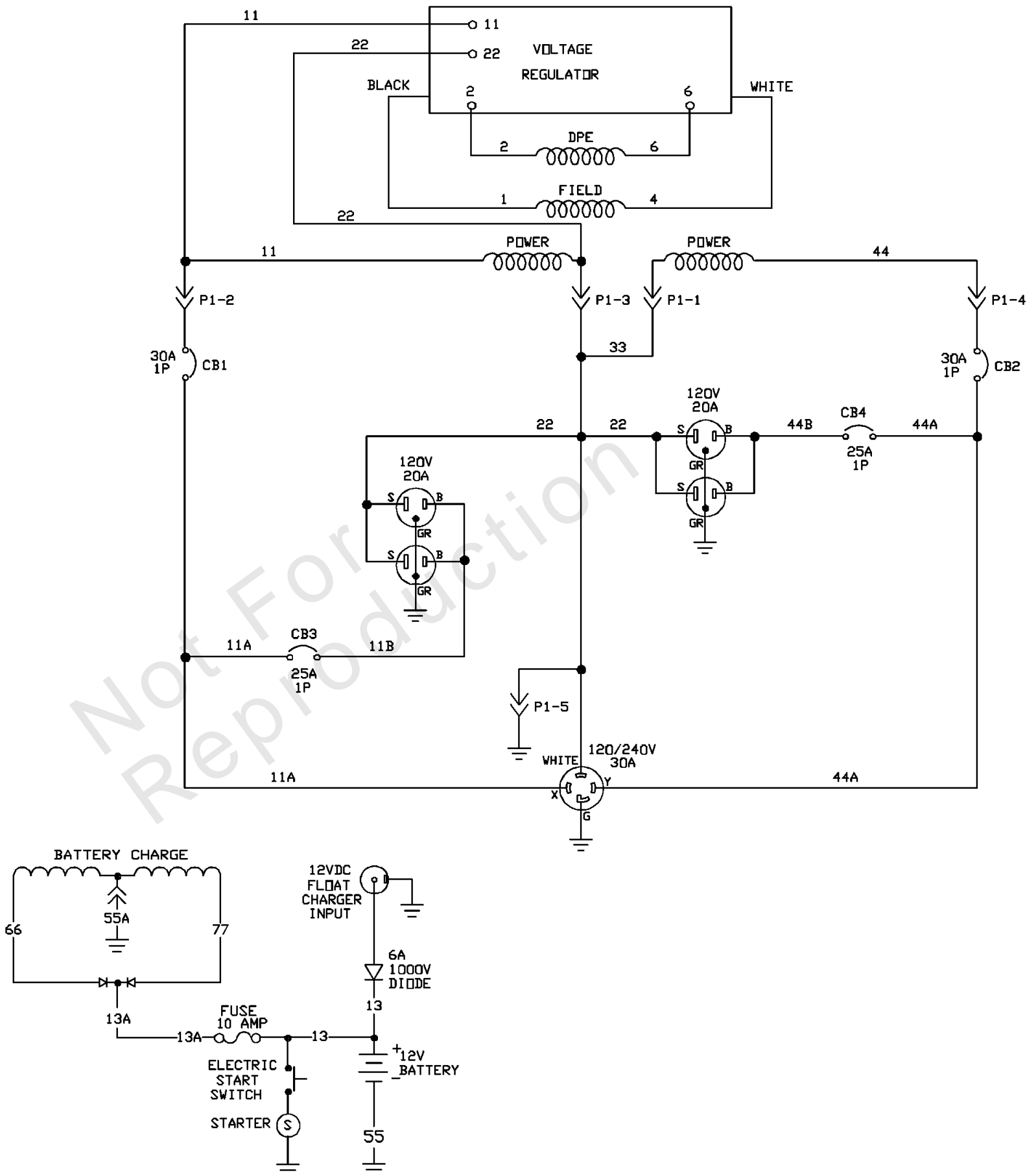
REF NO	PART NO	QTY	DESCRIPTION
--	-		Wiring Diagram Only
--	WARNING		Warning Generator Voltage Could Cause Electrical Shock or Burn Resulting in Death Or Serious Injury. To Avoid Electrical Shock Or Burn Hazard, Please Refer Service To Qualified Personnel.

Not For
Reproduction

Wiring Schematic (191786)

Note: Unless noted otherwise, use the standard torque specifications

Mfg. No: 030211-0



Wiring Schematic (191786)

REF NO	PART NO	QTY	DESCRIPTION
--	-		Wiring Schematic Only
--	WARNING		Warning Generator Voltage Could Cause Electrical Shock or Burn Resulting in Death Or Serious Injury. To Avoid Electrical Shock Or Burn Hazard, Please Refer Service To Qualified Personnel.

Not For
Reproduction

Hardware Identification & Torque Specifications

Torque Specification Chart								
FOR STANDARD METRIC MACHINE HARDWARE (Tolerance ± 20%)								
Property Class	5.6		8.8		10.9		12.9	
	Class 5.6		Class 8.8		Class 10.9		Class 12.9	
Size Of Hardware	in/lbs	Nm.	in/lbs	Nm.	in/lbs	Nm.	in/lbs	Nm.
	ft/lbs		ft/lbs		ft/lbs		ft/lbs	
M3	5.88	.56	13.44	1.28	19.2	1.80	22.92	2.15
M4	13.44	1.28	30.72	2.90	43.44	4.10	52.56	4.95
M5	26.4	2.50	60.96	5.75	5.97	8.10	7.15	9.7
M6	44.64	4.3	7.3	9.9	10.3	14	12.1	16.5
M7	5.2	7.1	12.1	16.5	16.9	23	19.9	27
M8	7.7	10.5	17.7	24	25	34	29	40
M10	15	21	35	48	50	67	59	81
M12	26	36	61	83	86.2	117	103	140
M14	42	58	101	132	136	185	162	220
M16	64	88	147	200	210	285	250	340
M18	89	121	202	275	287	390	346	470
M20	126	171	290	390	405	550	486	660
M22	169	230	390	530	559	745	656	890
M24	217	295	497	375	708	960	840	1140
M27	320	435	733	995	1032	1400	1239	1680
M30	435	590	995	1350	1401	1900	1681	2280
M33	590	800	1349	1830	1902	2580	2278	3090
M36	759	1030	1740	2360	2441	3310	2935	3980
M39	988	1340	2249	3050	3163	4290	3798	5150

Torque Specification Chart						
FOR STANDARD MACHINE HARDWARE (Tolerance ± 20%)						
Hardware Grade	No Marks		SAE Grade 5		SAE Grade 8	
	SAE Grade 2		SAE Grade 5		SAE Grade 8	
Size Of Hardware	in/lbs	Nm.	in/lbs	Nm.	in/lbs	Nm.
	ft/lbs		ft/lbs		ft/lbs	
8-32	19	2.1	30	3.4	41	4.6
8-36	20	2.3	31	3.5	43	4.9
10-24	27	3.1	43	4.9	60	6.8
10-32	31	3.5	49	5.5	68	7.7
1/4-20	66	7.6	8	10.9	12	16.3
1/4-28	76	8.6	10	13.6	14	19.0
5/16-18	11	15.0	17	23.1	25	34.0
5/16-24	12	16.3	19	25.8	29	34.0
3/8-16	20	27.2	30	40.8	45	61.2
3/8-24	23	31.3	35	47.6	50	68.0
7/16-14	30	40.8	50	68.0	70	95.2
7/16-20	35	47.6	55	74.8	80	108.8
1/2-13	50	68.0	75	102.0	110	149.6
1/2-20	55	74.8	90	122.4	120	163.2
9/16-12	65	88.4	110	149.6	150	204.0
9/16-18	75	102.0	120	163.2	170	231.2
5/8-11	90	122.4	150	204.0	220	299.2
5/8-18	100	136	180	244.8	240	326.4
3/4-10	160	217.6	260	353.6	386	525.0
3/4-16	180	244.8	300	408.0	420	571.2
7/8-9	140	190.4	400	544.0	600	816.0
7/8-14	155	210.8	440	598.4	660	897.6
1-8	220	299.2	580	788.8	900	1,244.0
1-12	240	326.4	640	870.4	1,000	1,360.0

The guides and ruler furnished below are designed to help you select the appropriate hardware.



Nut, M8

Thread Diameter (mm)

Inside Diameter (in) Threads per inch

Nut, 1/2-16



Screw, M8- 1.25 x 25

Thread Diameter (mm) Distance between threads (mm) Body Length (mm)

Body Diameter Threads per inch Body Length (in)

Screw, 1/2- 16 x 2



Standard Hardware Sizing

When a washer or nut is identified as 1/2" (M8), this is the *Nominal size*, meaning the *inside diameter* is 1/2 inch (8mm metric thread diameter); if a second number is present it represents the *threads per inch* (distance between threads).

When bolt or capscrew is identified as 1/2 - 16 x 2" (M8 - 1.25 x 50), this means the *Nominal size*, or body diameter is 1/2 inch (8mm metric thread diameter), the second number, 16, represents the *threads per inch*, (*distance between threads*). The final number is the body length of the bolt or screw, 2 inches (50mm).

NOTES

- These torque values are to be used for all hardware excluding: locknuts, self-tapping screws, thread forming screws, sheet metal screws and socket head setscrews.
- Recommended seating torque values for locknuts:
 - for prevailing torque locknuts - use 65% of grade 5 torques.
 - for flange whizlock nuts and screws - use 135% of grade 5 torques.
- Unless otherwise noted on assembly drawings, all torque values must meet this specification.

Common Hardware Types

Hex Head Capscrew



Washer



Carriage Bolt



Hex Nut

Wrench & Fastener Size Guide

1/4" Bolt or Nut Wrench—7/16"	5/16" Bolt or Nut Wrench—1/2"	3/8" Bolt or Nut Wrench—9/16"	7/16" Bolt or Nut Wrench (Bolt)—5/8" Wrench (Nut)—11/16"	1/2" Bolt or Nut Wrench—3/4"
M6 Bolt or Nut Wrench—10mm	M8 Bolt or Nut Wrench—13mm	M10 Bolt or Nut Wrench—17mm	M12 Bolt or Nut Wrench—19mm	M14 Bolt or Nut Wrench—22mm

